

A large black silhouette of a person, possibly a hunter or explorer, is positioned on the left side of the cover. The figure is wearing a hat and has a red circle on their chest. The background is a solid blue color.

**PITFALL**

---

**HARRY'S**

---

**GUIDE TO**

---

**JUNGLE**

---

**JOURNEYS**

---

**ACTIVISION®**  
**COLECOVISION™ SERIES**

Guide Harry through a treacherous jungle maze. He must leap over obstacles and dodge deadly dangers while grabbing all the treasure he can reach!

## GETTING UNDERWAY

1. With power OFF, insert game cartridge. Turn power ON.
2. To begin action after the title screen, move the Control Stick left or right.
3. **Use of Hand Controller:**
  - To run left or right, lean Control Stick in that direction.
  - To jump over obstacles, press either side button.
  - To climb up ladders, push the Control Stick forward; to descend, pull back.
  - To grab a swinging vine, press either side button while running left or right.
  - To release a vine, pull the Control Stick toward you.
  - To pick up a treasure, run by it.
  - To pause the action, press "2" on the Controller keypad.
  - To resume action, press any number other than "2."
  - To start a new game at any time, press "\*" or "#" on the Hand Controller, or Reset on the console unit. Uses no overlay.
4. **Scoring.** You start each adventure with 2000 points. Should you fall down a hole you will lose 100 points. Rolling logs will also cause point loss depending on how long contact is made with them.

Finding treasure earns you points. There are eight of each type of treasure in the game, 32 in all, worth a total of 112,000 points. Collect them all without losing any points for falling down holes or tripping on logs and you'll have earned a perfect score—114,000!





MONEY BAG

2000 points



SILVER BAR

3000 points



GOLD BAR

4000 points

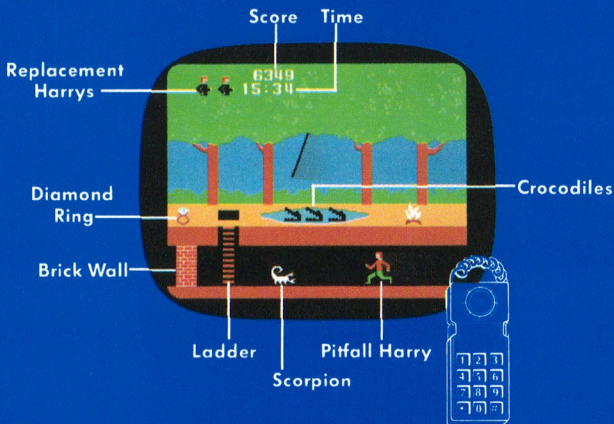


DIAMOND RING

5000 points



**5. Time.** You have 20 minutes to complete each adventure. Harry begins each game with 3 lives (see "The Hazards of Pitfall!"). Game ends when time runs out or Harry uses all 3 lives.



## **THE PERILS OF PITFALL!**

Pitfall Harry's Jungle Adventure™ involves great danger. Some hazards slow him down, robbing you of points; others stop him cold. The "inconvenient" hazards are open holes in the ground and rolling logs (see "Scoring"). The "catastrophic" hazards include scorpions, fires, cobras, crocodiles, swamps, quicksand and tar pits. These obstacles will not cost you points, but they will cost Harry one of his three lives.

## **JOIN "PITFALL HARRY'S EXPLORERS' CLUB"**

Score 20,000 points or more on any one of your adventures with Harry and you will be eligible to join this prestigious organization. Just send us a picture of your TV screen showing your score and we'll present you with the special "Explorers Club" membership emblem shown below.





## **A FEW WORDS ABOUT JUNGLE EXPLORERS**

Pitfall Harry aside, perhaps the best-known jungle explorer was David Livingstone, a Scottish medical missionary who spent many years in Africa.

In 1868, Livingstone lost contact with the outside world. Henry M. Stanley, a journalist who wrote for newspapers in New York and London, mounted an expedition to locate Livingstone. In 1871, after a difficult and exhausting search which often seemed destined to fail, Stanley located the missing missionary. He approached him and uttered the now-classic line, "Dr. Livingstone, I presume."

Livingstone and Stanley were only two of the Europeans who explored the vast continent of Africa, and they were latecomers. The earliest written histories tell us that ancient Egyptians were exploring Africa thousands of years ago!



## **HOW TO PURSUE YOUR FORTUNE WITH PITFALL HARRY**

### **Tips from David Crane, designer of Pitfall!™**

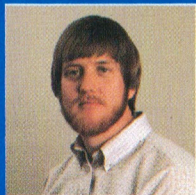
*David Crane is an award-winning Senior Designer at Activision. He also designed The Activision Decathlon, for the Atari® Video Computer System.™*

"As you set off on your first adventure with Harry, you'll notice two important features: The logs always roll from right to left, and the "replacement" Harrys (after Harry loses a life) drop from the trees on the left side of the screen. So, to minimize the number of rolling logs to be jumped, and the catastrophic hazards to be re-tried, simply run to the left.

"Pitfall Harry's trip must be made through a maze of surface and underground passages through the jungle. To capture all 32 treasures in under twenty minutes, Harry will have to use some of the underground passages. I'd suggest that you make a map of the terrain each time you play. Knowing the jungle and planning the best route to all the treasures is the only way to insure success time after time.

"Until you get really skilled at making Harry jump from croc to croc, you might wait until the crocodiles' jaws are closed, jump to the top of the first croc's head, then wait for the jaws to open and close again before jumping to the next one. Soon, you'll be skipping across crocs like they were stepping stones in a stream.

"If you can find any writing materials deep in the jungle, drop me a line. I'd love to hear how you and Harry are getting along."



Adapted by The Game Weavers.

*David Crane*



## **ACTIVISION® VIDEO GAME CARTRIDGE LIMITED ONE YEAR WARRANTY**

Activision, Inc. warrants to the original consumer purchaser of this Activision video game cartridge that it will be free from defects in materials and workmanship for a period of one (1) year from the date of purchase. Activision agrees to either repair or replace, at its option, free of charge, any cartridge discovered to be defective within the warranty period upon receipt of the cartridge, postage paid, with proof of date of purchase, at the address below.

This warranty is limited to the electronic circuitry and mechanical parts originally provided by Activision and is not applicable to normal wear and tear. This warranty shall not be applicable and shall be void if the defect in the cartridge has arisen through abuse, unreasonable use, mistreatment or neglect. This warranty is in lieu of all other express warranties and no other representation or claims of any nature shall be binding on or obligate Activision. **Any implied warranties applicable to this cartridge are limited to the one (1) year period described above. In no event will Activision be liable for any special, incidental, or consequential damage resulting from possession, use or malfunction of this cartridge.**

Some states do not allow limitations on how long an implied warranty lasts and/or the exclusion or limitation of incidental or consequential damages so the above limitations and/or exclusion or limitation of liability may not apply to you. This warranty gives you specific legal rights, and you may also have other rights which vary from state to state.

### **Consumer Replacements**

Activision Inc.  
Consumer Relations  
2350 Bayshore Frontage Rd.  
Mountain View, CA 94043

Let us get to know you! If you have questions or comments about our games or clubs, or want to be added to our mailing list, drop us a note or call the "Game Hotline" toll-free at (800) 633-GAME. In California, call (415) 940-6044/5.

**ACTIVISION<sup>®</sup>**

Drawer No. 7287 Mountain View, CA 94039  
Printed in U.S.A. © 1982, 1983 Activision VS-001-03

