

MILTON BRADLEY COMPANY  
BRIGHT BEGINNINGS™ SERIES

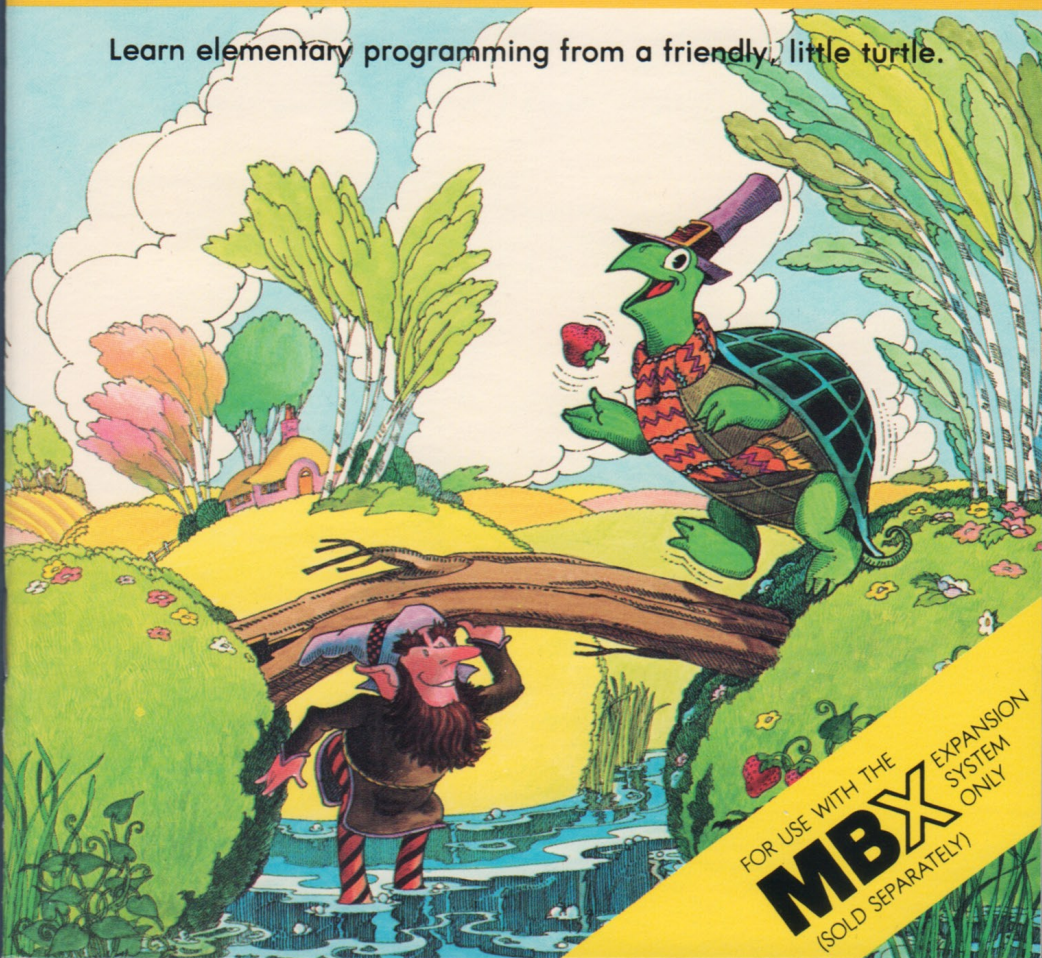
# TERRY TURTLE'S ADVENTURE™

A VIDEO ACTIVITY FOR AGES 4 TO 8

SOLID STATE SPEECH\* CARTRIDGE  
FOR THE TEXAS INSTRUMENTS HOME COMPUTERS

This cartridge can be used only with the **MBX Expansion System**. The system includes Voice Recognition, Speech Synthesis, Analog Joystick and Action-Input Keypad.

Learn elementary programming from a friendly little turtle.



FOR USE WITH THE  
**MBX** EXPANSION  
SYSTEM  
(SOLD SEPARATELY) ONLY

## **TERRY TURTLE'S ADVENTURE™ SOLID STATE SPEECH\* CARTRIDGE**

A game of simple programming skills for your child to play alone or with you.  
Especially designed for ages 4 to 8

The Terry Turtle's Adventure™ package contains:

- 1 Solid State Speech\* Cartridge
- 1 colorful overlay for the MBX Expansion System console
- 1 instruction booklet with a Discovery Guide for Parents

Programmed by: Milton Bradley Company

Book developed and written by: Milton Bradley Company

Copyright © 1983 by Texas Instruments Incorporated.  
Solid State Speech Cartridge program and data base contents copyright © 1983 by  
Milton Bradley Company.

See important warranty information at back of book.

Terry Turtle's Adventure is a trademark of Milton Bradley Company.  
\* Solid State Speech is a trademark of Texas Instruments Incorporated.

**Milton Bradley and Texas Instruments, two companies that create entertaining and educational products for your child, work together to bring you Bright Beginnings™ games. Bright Beginnings is a special software series that allows your child to discover, explore, and learn. Milton Bradley and Texas Instruments believe that video activities should do more than bring bright smiles—they should also bring bright ideas. That's why Bright Beginnings combines fun and learning so successfully.**

---

The Bright Beginnings cartridges are designed to be age-appropriate, introducing the proper learning tool at the right time in your child's life. The games encourage your child to interact with the computer as creatively as possible through exploratory learning activities.

There's something special in Bright Beginnings for you, the parent. Included in this instruction booklet is a Discovery Guide that tells you exactly what learning skills your child is developing. The Discovery Guide also goes one step further and suggests additional related activities that you and your child can do together. All of the activities include helpful hints on how to encourage children to develop learning skills by exploring the environment.

## How to Play Terry Turtle's Adventure

---

**This Terry Turtle's Adventure cartridge can only be played with the Texas Instruments Home Computer and the MBX Expansion System. When the MBX Expansion System is connected to the TI Home Computer, you can play the game in two ways: using Voice Recognition or using keys on the MBX console.**

---

### Here's What the MBX Expansion System Includes

- MBX console with built-in action keypad
- Triple-axis analog joystick (not used with this cartridge)
- Headset microphone
- Power supply
- Fully-illustrated instruction booklet

### Playing Terry Turtle's Adventure with the MBX Expansion System and your TI Home Computer

- Action-input keypad with its own colorful overlay allows for quick response and flexible play.
- Speech Synthesis allows you to hear phrases, prompts, and sound effects that are true-to-life, well-modulated, and full of inflection.
- Voice Recognition allows you to control the movement on the screen by the sound of your voice.

### Introducing Terry Turtle's Adventure

It's spring and your child's pal, Terry Turtle, wants to go home to his burrow. Only your child can help Terry move through the meadow, over the brook, through leafy shrubs, over logs, and under rocks. Terry meets trolls and strawberry-stealing critters along the way. Your child's challenge is to get Terry home to his burrow before winter comes.

Terry moves square by square on the screen. On his homeward-bound adventure, Terry meets obstacles, such as rocks, logs, shrubs, a winding brook, and trolls (friendly and unfriendly). Terry searches for juicy strawberries that make his adventure more exciting.

Your child can make Terry move forward, turn to the left and right, climb over logs and rocks, dig under rocks, eat shrubs, and swim in the brook. Your child controls everything that Terry does on the screen by giving him commands or "programming" him. Your child can either program Terry by saying commands aloud into the headset microphone or pressing keys on the MBX console.

Terry is very obedient. He responds if your child gives one command at a time or if your child strings commands together to give Terry many commands at one time. Your child can discover that multiple commands save time—and time is important, for he or she is playing against a seasonal clock.

As your child plays Terry Turtle's Adventure, the seasons change from spring to summer to fall and Terry must get home before winter comes.

## Using the MBX Expansion System and the Solid State Speech Cartridge

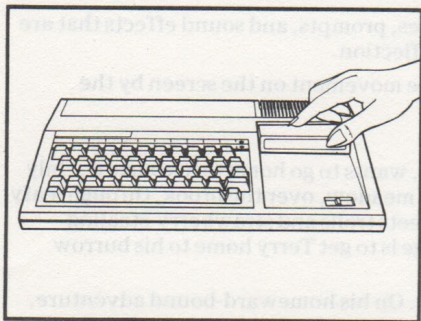
---

Follow these steps to use your TI Home Computer with the MBX Expansion System. Setting up the MBX System and inserting the Solid State Speech Cartridge is easy. If you have any questions on using the MBX console, see the MBX Expansion System booklet. If you have any problem inserting the cartridge, or if it is accidentally removed from the slot while in use, please see the "Maintenance and Service" section in this booklet.

---

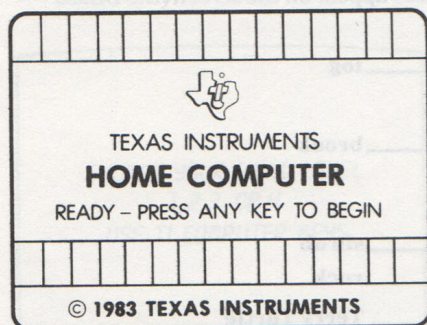
### Inserting the Cartridge into the TI Home Computer

1. If you have been programming in BASIC, save your data before inserting a cartridge. When you insert a cartridge into the console, the computer automatically erases all data or program material you have entered and returns to the master title screen to begin the new program.
2. Be sure the cartridge is free of static electricity before inserting it into the computer (see the "Maintenance and Service" section in this booklet).
3. Slide the cartridge into the slot on the console.



### Turning on the Equipment

1. Turn on the MBX keypad console and wait until you hear the MBX console say "ready."
2. Turn on the TI Home Computer, and wait for the master title screen to appear.



3. Press any key on the TI computer keyboard to make the cartridge title screen appear.

### Ending the Game and Removing the Cartridge

1. Turn off the MBX keypad console and the TI Home Computer.
2. Remove the cartridge from the slot.

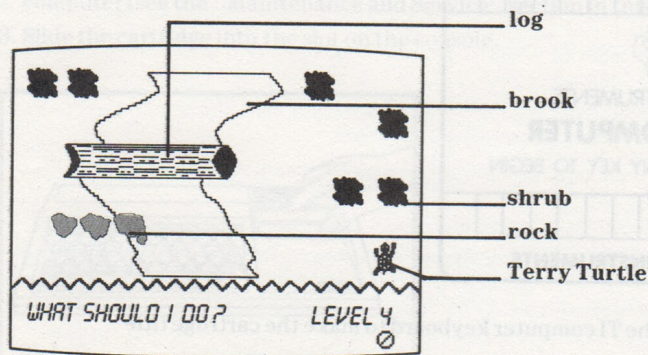
**Note:** The **QUIT** function on your TI computer keyboard is inoperable when the MBX console is attached and activated.

## Getting Started

After the cartridge title screen appears, your child sees a short demonstration of the game play. This unique DEMO MODE is self-instructing with written and auditory directions, a special feature of Bright Beginnings cartridges. In this DEMO MODE, there are no keys to press. You and your child can sit back and watch all the action on the screen. Terry Turtle has already been programmed to make several moves, so your child can discover how he moves, climbs, digs, swims, and turns, by watching closely.

### Actions in the DEMO MODE

1. Terry introduces himself and shows your child all his actions on the screen.
  - As Terry completes each action, have your child look at the bottom of the screen. Each demonstrated action is written here for your child to view.
  - Trolls and strawberry-stealing critters also appear on the screen (the DEMO MODE exhibits Level 4 action).



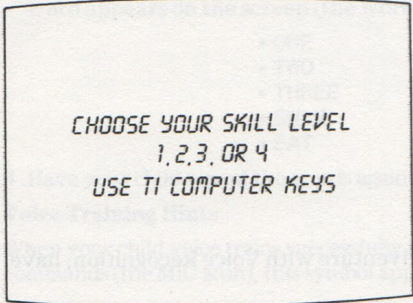
2. After viewing the DEMO MODE, have your child press any key on the TI Home Computer keyboard to view the option screens. The computer automatically replays the title screen and DEMO MODE until a TI Home Computer key is pressed.

---

### Selecting Level of Play

There are four levels of play, each more difficult than the other. Level 1 is the easiest and Level 4 is the most difficult.

The degree of difficulty depends on how far Terry is from his burrow at the start of the game (the closer he is, the easier the skill level).



CHOOSE YOUR SKILL LEVEL  
1, 2, 3, OR 4  
USE TI COMPUTER KEYS

Your child can choose the level of his or her choice by pressing keys 1, 2, 3, or 4 on the TI computer keyboard.

After a skill level is chosen, the voice training option screen appears.

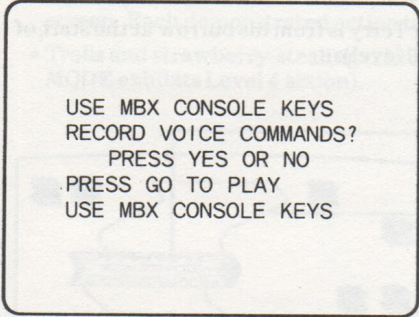
## Voice Training Option Screen

---

Terry Turtle's Adventure offers Voice Recognition, a unique feature that allows your child to control screen action by his or her spoken words. To utilize Voice Recognition, your child must "voice train," a procedure in which your child repeats certain commands into the headset microphone. Voice training is optional.

---

After a skill level is chosen, the voice training option screen appears.

A rectangular box with a black border containing the text of the voice training option screen.

USE MBX CONSOLE KEYS  
RECORD VOICE COMMANDS?  
PRESS YES OR NO  
PRESS GO TO PLAY  
USE MBX CONSOLE KEYS

If your child wishes to play Terry Turtle's Adventure with Voice Recognition, have him or her press **YES** on the MBX console.

If your child wishes to bypass voice training and play the game using the MBX console and not the headset microphone, have him or her press the **GO** or **NO** key on the MBX console and the game begins.

## Four Steps for Voice Training

Have your child place the headset microphone on and follow the detailed instructions on voice training in the MBX Expansion System booklet. Your child needs to program nine words into the computer. Guide your child in pronouncing the nine words clearly and firmly and in a somewhat more excited tone than normal conversation.

### Voice Training Sequence

1. Adjust the headset microphone so it is not more than two inches away from your child's mouth.
2. Have your child press **YES** on the MBX console when he or she sees this message on the screen **WHEN YOU ARE READY TO RECORD, PRESS YES.**
3. Have your child say the following words into the headset microphone as the word appears on the screen (the word can also be heard).

- |         |         |
|---------|---------|
| • ONE   | • CLIMB |
| • TWO   | • DIG   |
| • THREE | • LEFT  |
| • SWIM  | • RIGHT |
| • EAT   |         |

4. Have your child repeat the words again, one by one, as they reappear on the screen.

### Voice Training Hints

When your child voice trains successfully and the headset microphone is ready to take commands (the MIC is on), this symbol appears on the screen.



There is also a symbol to show you that the headset microphone is inoperable. This symbol appears on the screen.



See the "MIC Key" section in the MBX Expansion System booklet for more details.

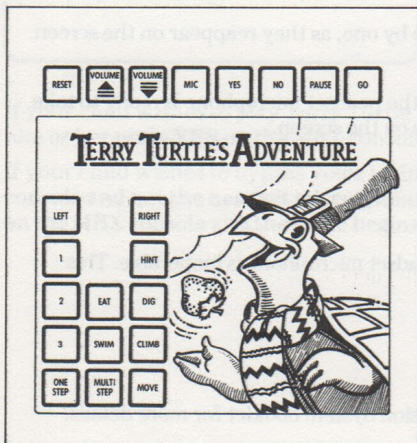
Once voice training is complete or the option to bypass voice training is selected, your child is ready to play the game. Terry Turtle wants to go back to his burrow. Your child can help him move through the meadow, over the brook, through shrubs, over logs, and sometimes under rocks by giving Terry commands. Terry meets trolls and strawberry-stealing critters along the way. Can your child get Terry to his burrow before winter comes?

### Moving Terry

Terry never moves diagonally. Terry always moves forward in the direction his head is facing. He can move up, down, left and right, square by square, on the screen. Your child can command Terry to move forward, turn left and right, climb over logs and rocks, dig under logs and rocks, eat shrubs, and swim through the brook. Terry responds if given one command at a time or if commands are strung together, giving him many commands at one time (see "Stringing Commands Together").

### Giving Terry Commands

Your child controls Terry's movements by giving him commands or programming him. He or she can program Terry in two ways: by speaking into the headset microphone or by pressing keys on the keypad console.

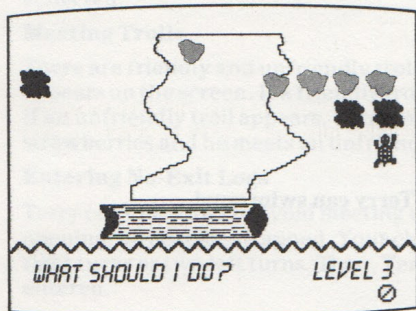


### Number Commands

A number command tells Terry to move forward the number of squares that your child presses. If there is a rock, log, shrub, or a brook blocking Terry's way, he cannot move past it. Your child can press the **HINT** key on the MBX console to find out how to move past these obstacles.

### "Eat" Command

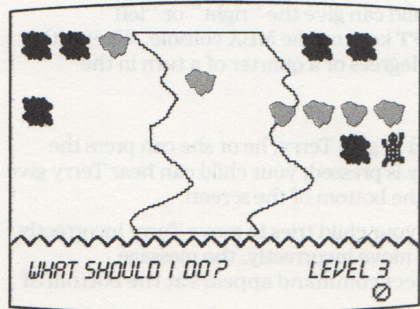
When Terry comes to a shrub, your child can give the "eat" command verbally or press the **EAT** key on the MBX console. Terry eats the shrub and moves into that square.



Terry can eat now!

### "Dig" Command

When Terry comes to a log or a rock, your child can give the "dig" command verbally or press the **DIG** key on the MBX console. The obstacle (log or rock) must have an empty square directly behind it. Then, Terry burrows under the rock or log and appears in the open square directly behind it. Terry moves two spaces when he digs.

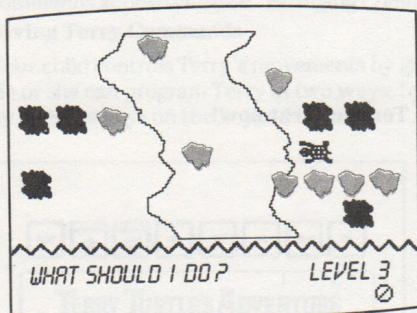


Terry can dig now!

Once your training is complete, you can play the game by pressing the **START** key. When you start the game, your child hears a voice that says, "Terry the Frog wants to go back to his home. Your children help him move through the meadow, over the hills, through the forest, over the pond, and sometimes under rocks by giving Terry commands. Every move Terry makes, you hear a sound effect. What sound effect do you hear when Terry moves? Is it a frog croak or a water splash? What sound effect do you hear when Terry jumps? Is it a frog croak or a water splash?"

## "Swim" Command

When Terry comes to a square that is adjacent to a brook, your child can give the "swim" command verbally or press the **SWIM** key on the MBX console. Then, Terry jumps into the brook and swims. Terry continues to swim until he reaches the other side or meets an obstacle.



Terry can swim now!

## "Climb" Command

When Terry faces an adjacent square with a rock or a log in it, your child can give the "climb" command verbally or press the **CLIMB** key on the MBX console. Next, Terry climbs onto the rock or log. Terry moves only one square when he climbs.

## "Right" and "Left" Commands

To turn Terry right or left on a square, your child can give the "right" or "left" commands verbally or press the **RIGHT** or **LEFT** keys on the MBX console. When either of these commands is given, Terry rotates 90 degrees or a quarter of a turn in the direction given.

## Using Hints

If your child cannot remember what command to give Terry, he or she can press the **HINT** key on the MBX console. If the **HINT** key is pressed, your child can hear Terry give him or her hints and also see them written at the bottom of the screen.

In Levels 1 and 2, automatic hints are given if your child tries to move Terry incorrectly. For example, if your child commands Terry to move incorrectly, the message **I CAN'T DO THAT!** appears and the correct command appears at the bottom of the screen.

---

### **Collecting Strawberries**

Luscious strawberries appear on the playing squares. Your child can move Terry to a square to collect strawberries. When a strawberry is collected, it appears at the bottom of the screen, letting your child know how many strawberries he or she has collected.

### **Meeting Trolls**

There are friendly and unfriendly trolls. When Terry climbs over a log, a troll appears on the screen. If a friendly troll appears, Terry is given three strawberries. If an unfriendly troll appears, Terry loses one strawberry. If Terry has no strawberries and he meets an unfriendly troll, Terry is thrown off the log.

### **Entering No-Exit Logs**

Terry can enter logs to avoid meeting trolls. If Terry enters a log that has only one opening, he becomes trapped. Your child can move Terry around by making two right turns or two left turns. Then, Terry can leave the log the same way he entered.

### **Meeting Strawberry-Stealing Critters**

Rabbits hop, snakes slither, and birds fly across the screen trying to capture strawberries before Terry can get to them. These critters can only move in a straight line—either horizontally, vertically, or diagonally. To stop a critter from snatching a strawberry, your child can move Terry to another square so that the strawberry is no longer in the critter's path.

## Stringing Commands Together

---

Commands are usually given one at a time. Your child watches Terry complete an action, and he or she can give Terry another command. For more challenging play, this cartridge allows your child to give Terry a "string" of commands at one time and see him perform the actions in a sequence.

---

### Multi-Step Commands

1. Have your child press the **MULTISTEP** key on the MBX console.
  - He or she looks at the screen and presses the appropriate keys on the MBX console or says the voice commands one right after another to string commands in a sequence. (As many as 16 commands may be given at one time.)
2. When your child is finished entering the sequence of actions, he or she can press the **MOVE** key on the MBX console and watch Terry perform the actions.

An abbreviation for each command appears at the bottom of the screen. An arrow points to each abbreviation as Terry performs an action.

Your child can erase or change a command by pressing the **NO** key on the MBX console only before the **MOVE** key is pressed.

If your child wishes to return to the single command method of programming, he or she can press the **ONE STEP** key on the MBX console.

**Note:** If your child collects a strawberry during the multistep method, he or she is awarded an extra strawberry for each one collected.

### Ending the Game

The game ends when your child successfully gets Terry to his burrow before the winter screen appears. At the end of the game, Terry juggles objects (depending upon the number of strawberries collected) at the bottom of the screen.

### Starting a New Game

Any time your child presses the **GO** key, he or she starts a new game and bypasses the skill level and voice training option screens.

Any time your child presses the **RESET** key, he or she starts a new game and returns to the skill level and voice training option screens.

# **TERRY TURTLE'S ADVENTURE**

Terry Turtle's Adventure is a computer program designed to help your child learn to use a computer. It is a fun and exciting way to learn about computers and the world of computer programming. The following highlights some of the sound educational principles that are built into this cartridge. You can reinforce, explain, and enhance these learning experiences as you watch your child experience them.

**Color and Shape Recognition**  
Because your child is learning to use a computer, it is important that he or she learn to recognize colors and shapes. Terry Turtle's Adventure is designed to help your child learn to recognize colors and shapes. The program uses a variety of colorful graphics and shapes to help your child learn to recognize them.

**Basic Map Reading Skills**  
It is important that children understand where they are, the location of objects, and the direction in which they are moving. Terry Turtle's Adventure is designed to help your child learn to read a map. The program uses a variety of colorful graphics and shapes to help your child learn to read a map.

**Decision Making and Evaluative Skills**  
Numerous decision points confront your child during the course of the game. He or she will need to evaluate the paths and options and use good judgment to make the best decision. As game play progresses, you may find that your child becomes more calculating in his or her decisions based on perception of time, distance, and overall results.

**Computer Literacy Skills**  
One of the basic goals of programming is control. Controlling a computer can enhance a child's sense of accomplishment. Two kinds of control are evident in Terry Turtle's Adventure: first, single-step control, in which the child takes Terry step-by-step through the playfield, using any or all of the function keys. Second, the multi-step mode, in which individual function commands are strung together to create a mini-program. As the child presses the MOVE key, the screen comes to life.

**Interaction and Direction Taking**  
Terry speaks to your child, sometimes asking for a direction and other times giving him or her a direction. Then, Terry waits for input from your child. If your child is correct, Terry acknowledges and moves on. If your child is incorrect, Terry tells your child that he cannot do what he has been asked to do and waits for the next direction. As a friend on the screen, Terry, the helpful turtle, both looks for guidance from your child and provides guidance to him or her.

**Terry Turtle's Adventure** is an enjoyable way to introduce your child to basic computer programming and computer literacy. Inspired by LOGO, an introductory computer language, this cartridge uses a whimsical animal to encourage your child to organize, sequence, and structure his or her world. Because of its similarity to LOGO, **Terry Turtle's Adventure** can help introduce your child to the world of computer programming in an entertaining environment. The following highlights represent some of the sound educational principles that are built into this cartridge. You can reinforce, explain, and enhance these learning experiences as you watch your child experience them.

---

### **Color and Shape Recognition**

Scenes on the computer screen represent natural settings and help your child begin to notice and appreciate the different colors and shapes of nature. Seasonal changes are vocally announced and reinforced by the changing background color of the meadow.

### **Basic Map Reading Skills**

It is important that children understand where they are, the location of neighborhood landmarks, and how to get to and from a specific location. This cartridge, **Terry's world**, is a place where there are many paths from which to choose. As your child plays the game, he or she begins to grasp the concept of distance and topography and realizes that the quickest route home is not necessarily a straight line. Later, your child may experiment with alternate routes and strategies that give him or her an understanding of time, distance, and goals.

### **Decision-Making and Evaluative Skills**

Numerous decision milestones confront your child during the course of the game. He or she will need to evaluate the paths and options and use good judgement to make the best decision. As game play progresses, you may find that your child becomes more calculating in his or her decisions based on perception of time, distance, and overall results.

### **Computer Literacy Skills**

One of the basic goals of programming is control. Controlling a computer can enhance a child's sense of accomplishment. Two kinds of control are evident in **Terry Turtle's Adventure**. First, single-step control, in which the child takes **Terry** step-by-step through the playfield, using any or all of the function keys. Second, the multistep mode, in which individual function commands are strung together to create a mini-program. As the child presses the **MOVE** key, the screen comes to life.

### **Interaction and Direction Taking**

**Terry** speaks to your child, sometimes asking for a direction and other times giving hints for a direction. Then, **Terry** waits for input from your child. If your child is correct, **Terry** acknowledges and moves out. If your child is incorrect, **Terry** tells your child that he cannot do what he has been asked to do and waits for the next direction. As a friend on the screen, **Terry**, the helpful turtle, both looks for guidance from your child and provides guidance to him or her.

Your child explores elementary programming, sequencing, and decision making with Terry Turtle's Adventure. These same skills can be further developed with the following suggested activities.

---

### Motor Skills Development

Your child can communicate with Terry Turtle using the keypad of the MBX System or by Voice Recognition. As he or she uses the cartridge, your child becomes more familiar with the two communication systems. As this happens, your child may improve his or her ability to react to on-screen action with eye-hand and eye-voice commands.

### Math Skills

Each of Terry's movements is calculated in unit moves. As your child becomes aware of this, he or she will be able to use basic counting to calculate how far to go in a given direction. With the multistep method, your child must total up all moves and functions to keep Terry on the right track within the sixteen allotted moves.

Now that you and your child have explored everything that Terry Turtle has to tell you about elementary programming skills, why not go one step further . . .

**Your child explores elementary programming, sequencing, and decision-making with Terry Turtle's Adventure. These same skills can be further developed with the following suggested activities.**

---

### **Scoot Around the Scutes—A Shell Game**

Draw an oval turtle shell in chalk on your driveway, or cut out a large cardboard oval and put it on the floor. Then divide the shell into "mini" shells or sections, just like on a real turtle. On a turtle, these sections are called scutes. Label each section with a different number. Then, challenge a friend to jump from Scute 3 to Scute 1 and so on.

### **Terry Turtle Says—Do This!**

A new way to play Simon Says is Terry Turtle Says. Pick a player to be "It." It gives commands that you and other friends must follow, but instead of saying "Simon says jump up," "It" would say, "Terry Turtle says jump up." Of course, if Terry Turtle doesn't command you to do the activity, the command should not be followed.

### **Plotting and Planning**

Hide a treasure in your house or outside. Then draw a map to show where the treasure is located (a big X could mark its spot). Draw landmarks on the map and mileage hints (like 30 steps). Give the map to a treasure-hunting friend and ask him or her to find the surprise. For additional fun, set a time limit on the hunt.

### **You're in Control**

Pretend your friend is a robot. Choose a goal and direct your friend toward the goal by shouting commands. Your friend cannot move unless you give a command. Try to give multiple commands like "Take two steps forward, turn to the right, go back four spaces."

Or, you and your friend can both pretend you're robots. Stand in different locations. Take turns shouting commands to each other. Try to direct each other toward the same goal or to meet each other at a specific location.

---

### **Turtle Hurdles**

You and your friends make an obstacle course. Find things to jump over, climb on, or crawl under, and set them up in a definite order. Now, pretend you're Terry Turtle and follow the route you laid out. Time yourself as you move through, over, and under the obstacles, and then challenge a friend to run the course. Change the order of the obstacles and play again.

### **Who's Next?**

Sit in a circle with a group of friends. One person begins the sequence by saying, "Terry Turtle took a trip with ..." and adds the name of an animal friend like "Harry Hound." The new person to the first player's right must repeat the above sentence and add another animal friend. Each person repeats the animal sequence and adds a new animal. If you can't remember the sequence, move out of the circle. The game continues until there is only one person left—the winner!

Cartridges are durable devices, but they should be handled with the same care you would give any other piece of software media. Information concerning use and service can be found in your *User's Reference Guide*.

---

### Caring for the Cartridge

Keep the cartridge clean and dry.

**Caution:** The contents of a cartridge can be damaged by static electricity discharges.

Static electricity buildups are more likely to occur when the humidity of the air is low (during winter and in areas with dry climates). To avoid damaging the cartridge, touch any metal object (a doorknob, a desk lamp, etc.) before handling it.

If static electricity is a problem where you live, you may want to buy a special carpet treatment that reduces static buildup. These preparations are usually available from hardware and office supply dealers.

### In Case of Difficulty

If the cartridge programs do not appear to be operating properly or if the cartridge is removed from the slot while the cartridge contents are being used, the computer may behave erratically. Turn off the computer. Withdraw the cartridge, align it with the cartridge opening and carefully reinsert it. Then turn on the computer and press any key to make the master title screen appear.

## Three-Month Limited Warranty Home Computer Software Cartridge

---

**Texas Instruments Incorporated extends this consumer warranty only to the original consumer purchaser.**

---

### Warranty Coverage

This warranty covers the electronic and case components of the software cartridge. These components include all semiconductor chips and devices, plastics, boards, wiring and all other hardware contained in this cartridge ("the Hardware"). This limited warranty does not extend to the programs contained in the software cartridge and in the accompanying book materials ("the Programs").

The Hardware is warranted against malfunction due to defective materials or construction. **This warranty is void if the Hardware has been damaged by accident, unreasonable use, neglect, improper service or other causes not arising out of defects in materials or workmanship.**

### Warranty Duration

The Hardware is warranted for a period of three months from the date of the original purchase by the consumer.

### Warranty Disclaimers

**Any implied warranties arising out of this sale, including but not limited to the implied warranties of merchantability and fitness for a particular purpose, are limited in duration to the above three-month period. Texas Instruments shall not be liable for loss of use of the Hardware or other incidental or consequential costs, expenses, or damages incurred by the consumer or any other user.**

Some states do not allow the exclusion or limitation of implied warranties or consequential damages, so the above limitations or exclusions may not apply to you in those states.

### Legal Remedies

This warranty gives you specific legal rights, and you may also have other rights that vary from state to state.

### Performance by TI Under Warranty

During the above three-month warranty period, defective Hardware will be replaced when it is returned postage prepaid to a Texas Instruments Service Facility listed below. The replacement Hardware will be warranted for three months from date of replacement. Other than the postage requirement, no charge will be made for replacement.

TI strongly recommends that you insure the Hardware for value prior to mailing.

## Texas Instruments Consumer Service Facilities

---

### **U.S. Residents:**

Texas Instruments Service Facility  
P.O. Box 2500  
Lubbock, Texas 79408

### **Canadian Residents:**

Texas Instruments Consumer Service  
41 Shelley Road  
Richmond Hill, Ontario, Canada L4C5G4

Consumers in California and Oregon may contact the following Texas Instruments offices for additional assistance or information.

Texas Instruments Consumer Service  
831 South Douglas Street  
El Segundo, California 90245  
(213) 973-1803

Texas Instruments Consumer Service  
6700 Southwest 105th  
Kristin Square, Suite 110  
Beaverton, Oregon 97005  
(503) 643-6758

### **Important Notice of Disclaimer Regarding the Programs**

The following should be read and understood before purchasing and/or using the software cartridge.

TI does not warrant that the Programs will be free from error or will meet the specific requirements of the consumer. The consumer assumes complete responsibility for any decision made or actions taken based on information obtained using the Programs. Any statements made concerning the utility of the Programs are not to be construed as express or implied warranties.

**Texas Instruments makes no warranty, either express or implied, including but not limited to any implied warranties of merchantability and fitness for a particular purpose, regarding the programs and makes all programs available solely on an "as is" basis. In no event shall Texas Instruments be liable to anyone for special, collateral, incidental, or consequential damages in connection with or arising out of the purchase or use of the programs and the sole and exclusive liability of Texas Instruments, regardless of the form of action, shall not exceed the purchase price of the software cartridge. Moreover, Texas Instruments shall not be liable for any claim of any kind whatsoever by any other party against the user of the programs.**

Some states do not allow the exclusion or limitation of implied warranties or consequential damages, so the above limitations or exclusions may not apply to you in those states.

## Quick Reference Guide

---

MBX System	Voice Commands	Action
<b>LEFT</b>	"left"	Turns Terry one quarter turn to the left.
<b>RIGHT</b>	"right"	Turns Terry one quarter turn to the right.
<b>1</b>	"one"	Moves Terry forward one square.
<b>2</b>	"two"	Moves Terry forward two squares.
<b>3</b>	"three"	Moves Terry forward three squares.
<b>EAT</b>	"eat"	Causes Terry to eat shrub obstacle.
<b>DIG</b>	"dig"	Causes Terry to burrow under a rock or log obstacle.
<b>CLIMB</b>	"climb"	Causes Terry to climb onto a rock or log obstacle.
<b>SWIM</b>	"swim"	Causes Terry to swim.
<b>HINT</b>		Causes Terry to tell you what his next move could be.
<b>MULTISTEP</b>		Allows you to give Terry multiple commands; up to 16 in sequence.
<b>MOVE</b>		Causes Terry to do the multiple command sequence.
<b>ONE STEP</b>		Returns to the single command mode after using the multiple command mode.

**Note:** Please see the MBX Expansion System booklet for more information on any of the MBX keys not listed here.

Texas Instruments invented the integrated circuit,  
the microprocessor, and the microcomputer.  
Being first is our tradition.

