

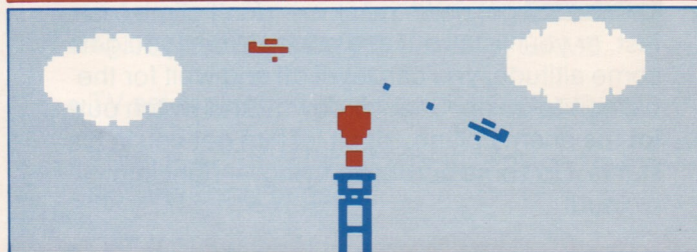
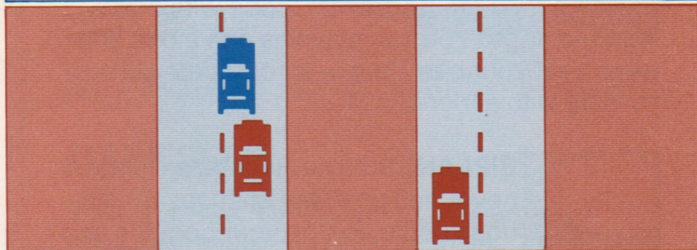
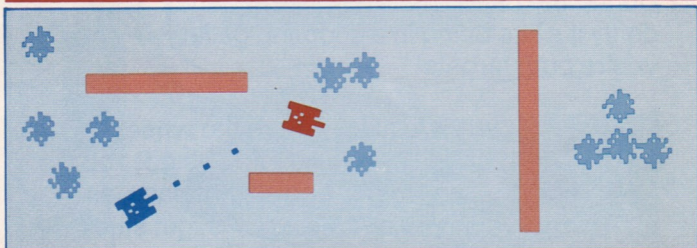
MATTEL ELECTRONICS®

IntelliVision™ Intelligent Television

CARTRIDGE INSTRUCTIONS

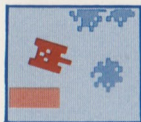
TRIPLE ACTION™

(FOR 1 OR 2 PLAYERS)



(FOR COLOR TV VIEWING ONLY)

THREE FOR ALL...



BATTLE TANKS Take command of a fast battle tank and stalk your enemy in deadly one-on-one combat.

Use the walls for cover, as you move fast into firing position. But **LOOK OUT!** During the battle the shells can ricochet...suddenly it's like being in a shooting gallery — and you're *both* targets!



CAR RACING Take the wheel on a road full of crazies...you've got 100 "miles" to go. And it's not easy, as you steer around wrecks, get stuck

behind a maddening crawler, cope with weaving road hogs! You can play this one alone and try to beat your best time — or compete side-by-side with a friend!

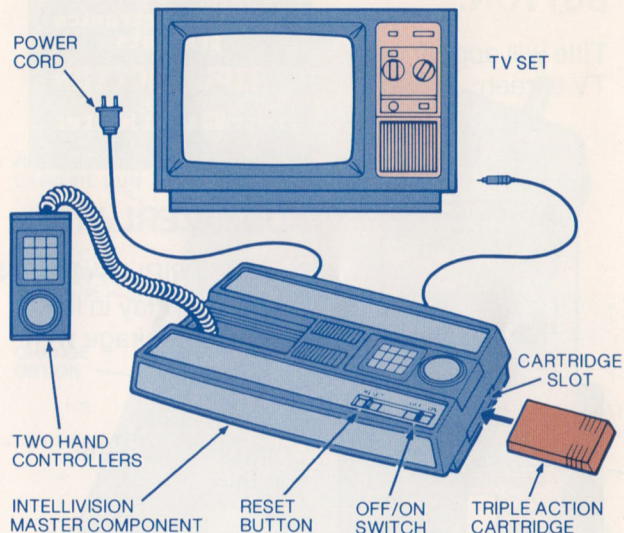


BIPLANES The Red Baron himself never had so many chances for glorious battle. Put on your goggles and get up in the sky — don't climb too

fast, or you'll stall out and crash! When you get some altitude, you can level off and wait for the balloon to go up. Shoot it down! And watch out for the enemy plane...don't let him get you in his sights. Do some acrobatic flying — right into a cloud!



CHECK YOUR EQUIPMENT



MAKE SURE

- **MASTER COMPONENT** is connected to TV set and power cord is plugged in.
- **ANTENNA SWITCH BOX** is set at **GAME**.
- TV set is plugged in and properly adjusted.
- **TRIPLE ACTION CARTRIDGE** is placed in the slot and firmly engaged.
- **OFF/ON Switch** is turned on.



PRESS RESET BUTTON:

Title will appear on
TV screen:

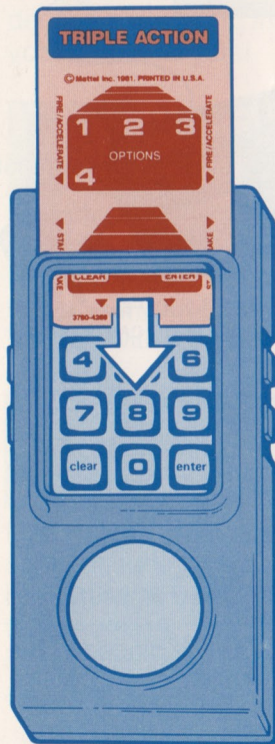


ADD OVERLAYS

Find the TRIPLE ACTION™ keypad overlay in the cartridge package with this booklet.

Remove Hand Controller from the console.

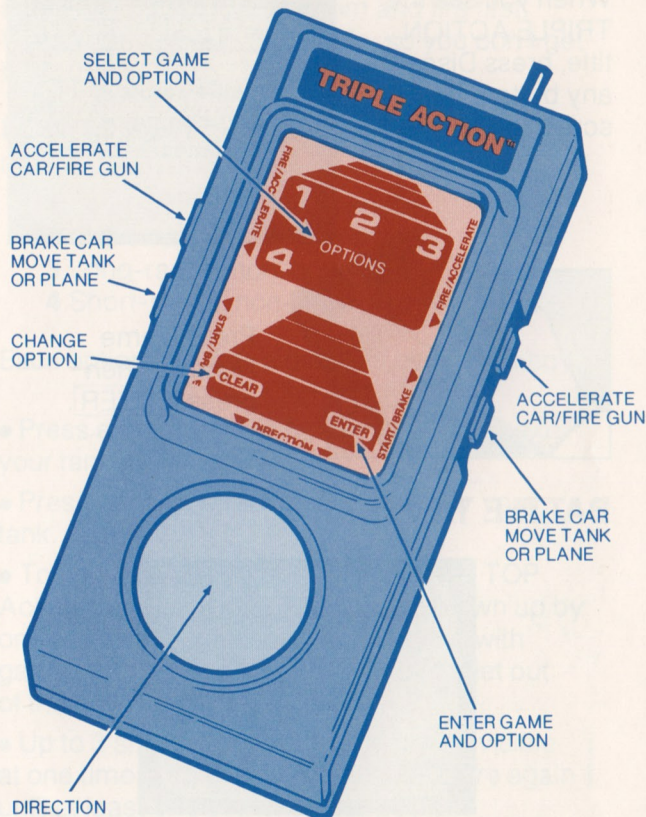
Insert overlay into the Hand Controller. Make sure the overlay fits tight and is all the way in. The overlay will be your visual guide in the TRIPLE ACTION games.



HAND CONTROLLER

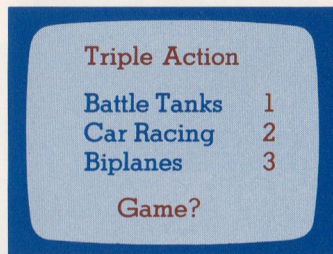


EXAMINE YOUR CONTROLS



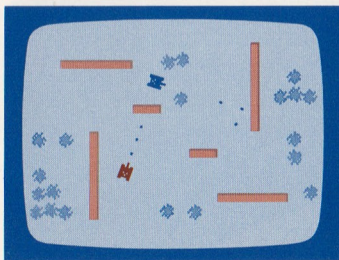
GETTING STARTED

When you see the TRIPLE ACTION title, press Disc or any button. The screen shows:



Press Game Number, then press **ENTER**.

BATTLE TANKS



THE OBJECT Outmaneuver and outshoot your opponent and score 15 points first.



STRATEGY Keep moving...take shelter behind walls (trees won't protect you)...figure the angles and distance, take aim and fire first. Watch out for bouncing shells, so you don't get hit yourself!

HOW TO PLAY • Choose one of these options, then press **ENTER**:

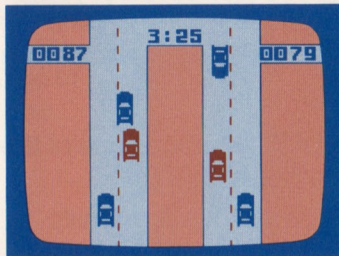
- 1 Long-range bouncing shells
- 2 Short-range bouncing shells
- 3 Long-range, non-bouncing
- 4 Short-range, non-bouncing

Each option requires a different battle strategy.

- Press either LOWER Action Button to make your tank move forward.
- Press edge of Direction Disc to steer your tank.
- To fire your cannon, press one of the TOP Action Buttons. (Note: You *can* be blown up by one of your own rounds when playing with game option #1 or #2, so be ready to get out of the way, fast!)
- Up to 3 shells from each tank can be visible at one time, and you won't be able to fire again until at least one of them disappears.
- The game is over when one tank scores 15 points.



CAR RACING



THE OBJECT To drive 100 “miles” in the fastest time.

STRATEGY Drive fast, but carefully. Watch out for road hogs, reckless drivers and other travelling fools!

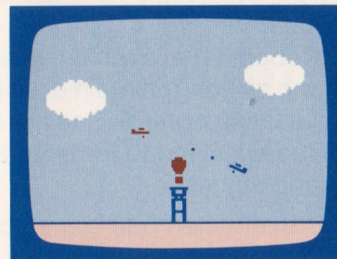
HOW TO PLAY • Choose one option, then press **ENTER**:

- 1 “Normal” traffic
- 2 “Heavy” traffic

- Press either TOP Action Button to make your car move forward. Keep pressing button in to maintain top speed.
- Press either LOWER Action Button to brake (Note: it takes a while to get your car stopped, so don’t tailgate!).
- Press left or right side of Direction Disc to change lanes.
- Crashes cost you time, so drive defensively.
- The game is over when odometers read 100.



BIPLANES



THE OBJECT Score 15 points first, by shooting down your opponent’s plane or the ascending balloon...and by *not* crashing your own plane!

STRATEGY Keep your plane flying under control to get more shots at the balloon when it goes up...use cloud cover and aerial skill to outmaneuver your opponent during “dogfights”.

HOW TO PLAY: • Choose one of these options, then press **ENTER**:

- 1 Short-range bullets
- 2 Long-range bullets

- Take off by pressing either LOWER Action Button *and* the top edge of Direction Disc.
- Don’t make your plane climb too fast, or you’ll stall and crash. If you start to lose altitude, press bottom of Disc to head nose down — so you can gain speed and stability.



- To fire at the ascending balloon or your opponent's plane, aim at the target and press either TOP Action Button.
- You can do loops, dive, even fly upside down — as long as you maintain enough "air-speed" to have flying control. Use the cloud cover and daredevil flying to force your opponent into making mistakes!
- The game is over when one plane scores 15 points.

90 DAY LIMITED WARRANTY

Mattel Electronics warrants to the original consumer purchaser of any cartridge or cassette it manufactures that the product will be free of defects in material or workmanship for 90 days from the date of purchase. If defective, return the product along with proof of the date-of-purchase to either your local dealer or, postage prepaid, to:

Mattel Electronics Repair Center
5000 West 147th Street
Hawthorne, California 90250

for repair or replacement. This warranty gives you specific legal rights, and you may also have other rights which vary from state to state. This warranty does not cover damage resulting from accident, misuse or abuse.



HOW TO ORDER YOUR REPLACEMENT OVERLAYS

NOTE: SEPARATE CARTRIDGES ARE NEEDED FOR THE PROGRAMS LISTED BELOW.

Complete the order form below and mail it with your check or money order for \$1.25 per set of 2 overlays. California residents add 6% sales tax. Address check or money order to Mattel Electronics, Box 2350, Hollywood, CA 90025. Allow 4-6 weeks for delivery. Offer subject to availability.

Mark quantity ordered

BOWLING _____
SOCCER _____
LAS VEGAS ROULETTE _____
ELECTRIC CO. MATH FUN _____
ELECTRIC CO. WORD FUN _____
FOOTBALL _____
HORSE RACING _____
CHECKERS _____
AUTO RACING _____
SEA BATTLE _____
SKIING _____
TENNIS _____

3333-4289 _____ sets
1683-4289 _____ sets
1118-4289 _____ sets
2613-4289 _____ sets
1122-4289 _____ sets
2610-4289 _____ sets
1123-4289 _____ sets
1120-4289 _____ sets
1113-4289 _____ sets
1818-4289 _____ sets
1817-4289 _____ sets
1814-4289 _____ sets

GOLF

BASKETBALL _____
HOCKEY _____
BACKGAMMON _____
LAS VEGAS POKER & BLACKJACK _____
ARMOR BATTLE _____
BASEBALL _____
SPACE BATTLE _____
BOXING _____
SPACE ARMADA _____
ASTROSMASH _____
SNAFU _____
TRIPLE ACTION _____

1816-4289 _____ sets
2615-4289 _____ sets
1114-4289 _____ sets
1119-4289 _____ sets
2611-4289 _____ sets
1121-4289 _____ sets
2614-4289 _____ sets
2612-4289 _____ sets
1819-4289 _____ sets
3759-4289 _____ sets
3605-4289 _____ sets
3758-4289 _____ sets
3780-4289 _____ sets

Amount enclosed _____

Total sets ordered _____

Your name _____

Address _____

City _____

State _____

Zip Code _____

MATTEL ELECTRONICS®
IntelliVision™
Intelligent Television



Other electronic games
available from Mattel Electronics.
Look for them!