

MS-DOS INSTALLATION STEPS

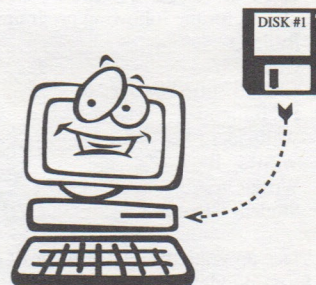
Initial Installation

STEP 1: Place program disk in the A: or B: drive.

STEP 2: Type **A:** or **B:** and hit **ENTER**.

STEP 3: Type **GO** and hit **ENTER**.

EXAMPLE: C>A: (**ENTER**)
A>GO (**ENTER**)



If the program requires a hard drive to run:

At the beginning of installation, the computer will ask for the "Source Drive" and the "Destination Path." The computer has listed the correct answers for both, so simply hit **ENTER** after both lines to install it automatically.

EXAMPLE: SOURCE DRIVE (A:) hit **ENTER**
DESTINATION PATH (C:\NAME OF PROGRAM) hit **ENTER**

The computer will then install the program. When installation is completed, a box will appear on the screen*:

INSTALL
COMPLETED

Hit **ENTER** to read the Startup procedure. After reading the Startup procedure, follow the instructions at the bottom of the screen:

P to Print this screen, or **ESC** to exit.

NOTE: **ESC** will return you to the DOS prompt.

* In some cases, information on graphics and/or sound will appear. After reading, press any key to exit. Then the "INSTALL COMPLETED" box will appear.

After Initial Installation

STEP 1: Prompt the C drive - type **C:** and hit **ENTER**.

STEP 2: Run the C drive directory - type **DIR** and hit **ENTER**.

STEP 3: Choose the program you want from the directory - type **CD (NAME OF PROGRAM)** and hit **ENTER**.

STEP 4: Type the name of the program and hit **ENTER**.

GENERAL EXAMPLE FOR THE PROGRAM "SEAWORD":

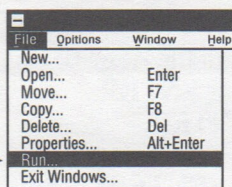
C:\>CD SEAWORD (**ENTER**)

C:\SEAWORD> SEAWORD (**ENTER**)

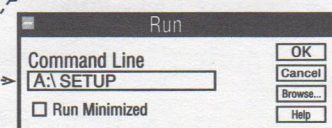
WINDOWS® INSTALLATION STEPS

Initial Installation for the following programs:

Bible-Q
GEO USA
Grand Unified Converter
PC Bartender
Wallpaper Plus
WinBag II
Write-On
Student Organizer



Type



STEP 1: Place program disk in the A: or B: drive.

STEP 2: From Windows, in the Program Manager, select File and click on **RUN**.

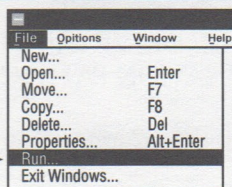
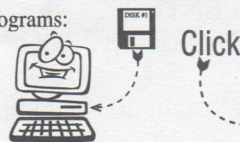
STEP 3: In the RUN window, type **A:\SETUP**, then click on **OK** (or hit **ENTER**).

The program will then install on to the hard drive.

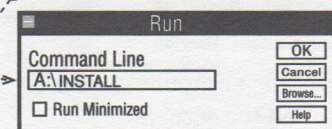
To start the program, double click on the program's icon. After the initial click on the program icon, it will appear in the Program Manager.

Initial Installation for the following programs:

NST Calculator
Your Photos
Daily Notes
Quatra Command
F18:No Fly Zone



Type



STEP 1: Place program disk in the A: or B: drive.

STEP 2: From Windows, in the Program Manager, select File and click on **RUN**.

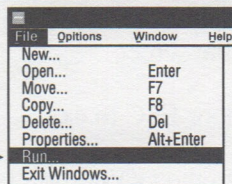
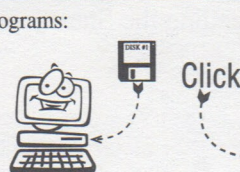
STEP 3: In the RUN window, type **A:\INSTALL**, then click on **OK** (or hit **ENTER**).

The program will then install on to the hard drive.

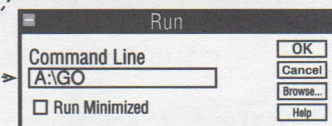
To start the program, double click on the program's icon. After the initial click on the program icon, it will appear in the Program Manager (except for Your Photos; Quatra Command, F18:No Fly Zone, please see below).

Initial Installation for the following programs:

Confound
Diet Disk
Chalkboard Math
Car Maintenance
EZ Auto Troubleshooter
World Time



Type



STEP 1: Place program disk in the A: or B: drive.

STEP 2: From Windows, in the Program Manager, select File and click on **RUN**.

STEP 3: In the RUN window, type **A:\GO**, then click on **OK** (or hit **ENTER**).

The program will then install on to the hard drive.

Now use the following steps to create a group and an icon for the program (this procedure should be followed for Your Photos as well):

STEP 1: In the Program Manager, select File and click on **NEW**.

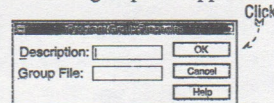
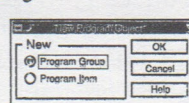
STEP 2: In the **NEW** window, select **Group Item** and click on **OK**.

STEP 3: The computer will ask you for a description. Type the name of the program and click on **OK**. The new group will appear in the center of the screen.

STEP 4: Go to File and click on **NEW** again.

STEP 5: Select **Program Item** and click on **OK**.

STEP 6: The computer will ask you for the following:



Type in the information needed * (see below to find the information for your program) and click on **OK**.

The icon will appear in your new group. Double click on the icon to begin the program.

*command lines and working directories for windows programs:

Description	Command Line	Working Directory
Confound	Confound.EXE	C:\Confound
Diet Disk	Diet.EXE	C:\Dietwin
Chalkboard Math	Cbmtht.EXE	C:\Cbmth
Car Maintenance	Car.EXE	C:\Carmain
EZ Auto Troubleshooter	EZauto.EXE	C:\EZauto
World Time	Wtime21.EXE	C:\Worldtim
Your Photos	Photo5.EXE	C:\APhotos
Quatra Command	Quatra.EXE	C:\AQuatra
F18:No fly zone	F18NFZ.EXE	C:\F18NFZ

