



COMMODORE 64[®]/128[™]

OBJECTIVE

The evil Goblin is wreaking havoc on an unsuspecting world, casting spells and banishing its treasures to his underground factory deep in the bowels of the Earth. How can he be stopped? What can we do? Who can do it? There's only one savior—our hero—THING on a Spring!

Our hero has infiltrated the Goblin's factory. He doesn't know what to expect or where to go. All he knows is that there are nine pieces of jigsaw he must collect so that when they're put together, he will have a clue as to how he can kill the evil Goblin.

The Goblin has laid many traps and has forewarned his guards and ghouls that an unwelcome visitor could soon be in their midst. All THING needs to keep going is oil for his spring, which can be found in the factory complex, but beware—as the ghouls and guards are intent on seeing THING seize up and rust!

The Goblin has disguised 5 items which control gadgets that you must use to explore the whole complex and ensure the demise of the Goblin. (For example, you need the escalator gadget in order to use the escalator.) As you move from room to room, keep your eyes open and be sure to pick up any gadgets, oil cans, or puzzle pieces you see.

LOADING INSTRUCTIONS






- Turn on computer and disk drive.
- Insert disk into the disk drive, label side up.
- Type **LOAD****, **8,1** and press **RETURN**.

With a Fast Load™ Cartridge:

- Turn on computer and disk drive.
- Insert disk into the disk drive, label side up.
- Press and hold the **C=** (Commodore key) and the **RUN/STOP** key simultaneously.

HOW TO MOVE

Joystick Port 1 or 2:

Left  Duck & Leap  Right  Somersault  or 
+ FIRE BUTTON

Keyboard:

Left Z Duck & Leap ?/ Right X Somersault SPACE BAR

To Re-Define Keys—Press R when on the Title Page.

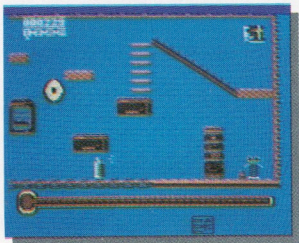
When on the Life screens, press **SPACE BAR** or **FIRE BUTTON** to stop the lift.
Move right to exit at the next floor.

SCORING

Collect Jigsaw	400 points
Oil	100 points
Switch	200 points
Kill Goblin	1000 points
+ Time Related Bonus	

You may find it necessary to re-start the game. To do this, press the **RUN/STOP** and **RESTORE** keys simultaneously.

THING ON A SPRING™



Ghouls. Guards. Traps. The evil Goblin's factory manufactures just one thing: Trouble.



Talk about an oil crisis. Without lubrication, you'll seize up and rust.

Deep within the earth's bowels there lives an evil presence. Until recently, this force of darkness was content tormenting lost souls and going out with ghouls. Lately, though, he's come up in the world. Wreaking havoc on innocent bystanders. Casting spells. And spreading mayhem.

Our hero—nice to meet you—has infiltrated the evil one's factory. You won't know where to go. Or what to expect. But you do know there are nine missing pieces to a jigsaw. And therein lies the clue to destroying the black prince.

The bad news is you'll have to explore his compound first; that is, if you can figure out the gadgets, get past the guards and sidestep the traps.

It could be the end of you. But there is one comforting thought.

Even if the worst happens, you're sure to bounce back in no time.

Distributed by Val-U-Line Software Co., a Division of EPYX, Inc.
© 1987 Gremlin Graphics Software Ltd., U.K.

Part No. 20107D

